

**COMPLEJO ADMINISTRATIVO CULTURAL
PUERTO DE BUENOS AIRES**

A+A

DÁRSENA F

FRANK SZLAIFSZTEIN

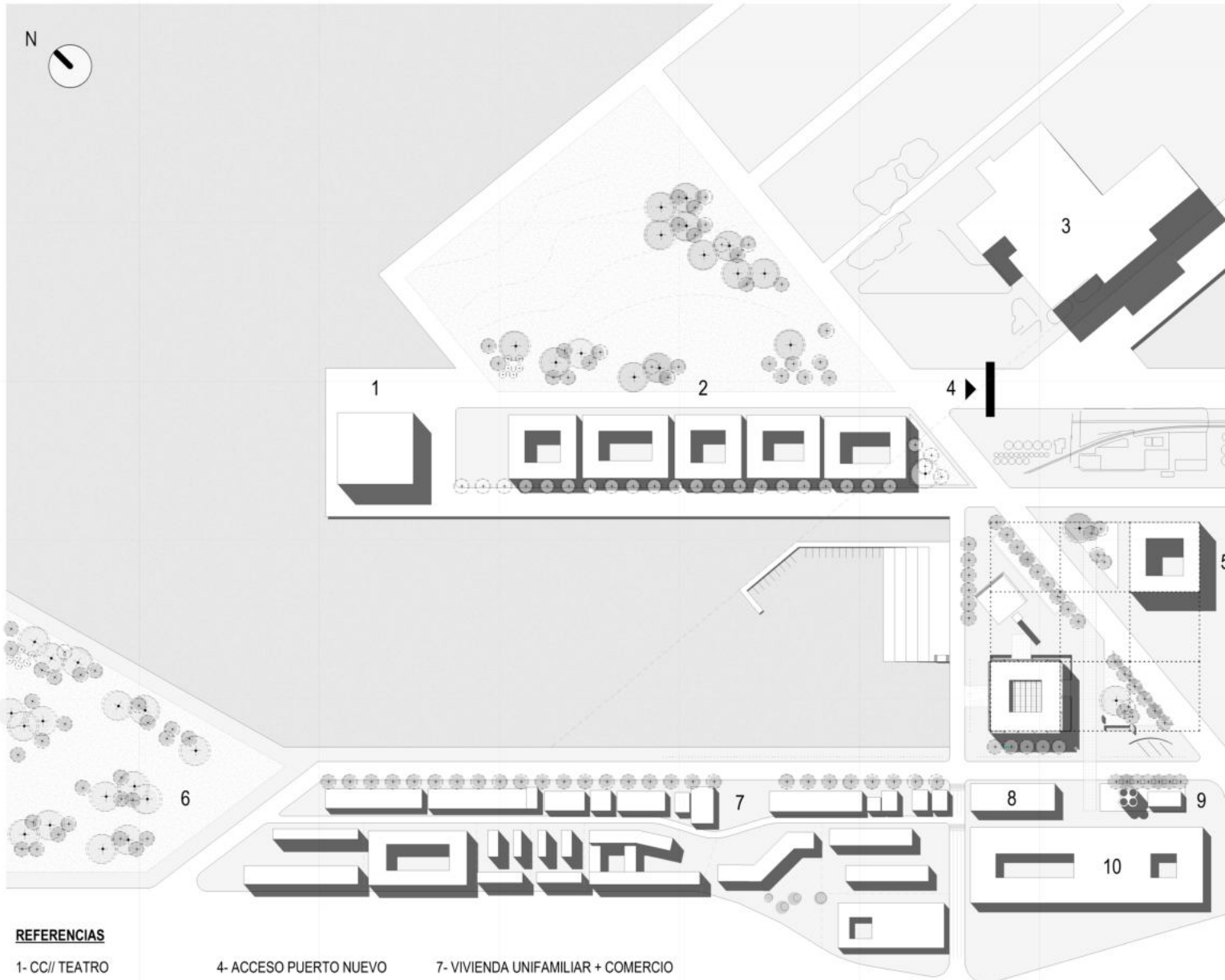
COMPLEJO ADMINISTRATIVO CULTURAL DEL PUERTO

COMO REMATE DEL MASTERPLAN URBANO QUE PROPONE RECUPERAR EL BORDE COSTERO, EL *CACP* SE ERIGE COMO UN ICONO AL PROTAGONIZAR EL FINAL DEL RECORRIDO COMERCIAL COSTERO DESDE COSTA SALGUERO.

CONSOLIDANDO LA CALLE PRINCIPAL DEL PROYECTO URBANO, EL EDIFICIO DE FUERTE CARACTER GEOMETRICO LOGRA REDUCIR SU PISADA, GANANDO EN ALTURA Y GENERANDO UNA PLAZA VERDE COMO COLCHON ACUSTICO Y CLIMATICO EN RELACION AL MUSEO DEL PUERTO, Y UNA PLAZA CIVICA EN RELACION AL PROGRAMA CULTURAL DE APOYO

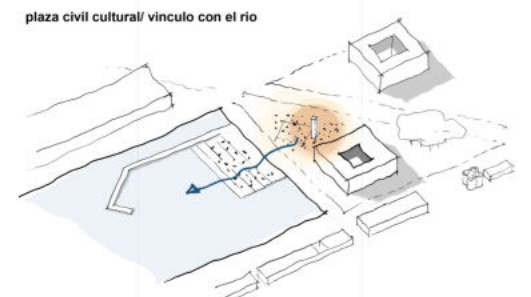
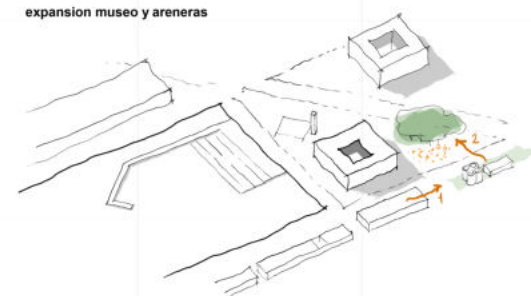
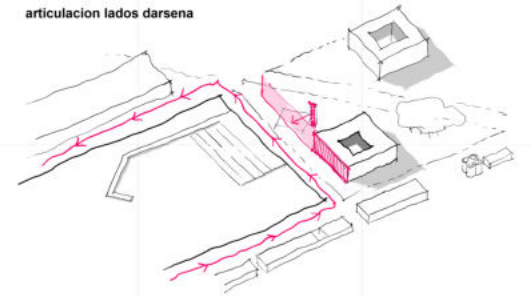
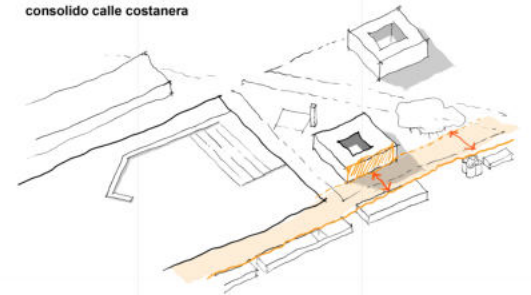
DE GESTION ESTATAL, EL PROGRAMA SE PERCIBE PESADO E INSTITUCIONAL DESDE EL PATIO CENTRAL PARA LUEGO DESMATERIALIZARSE HACIA EL RIO, EL PUERTO Y LA CIUDAD CON UNA FACHADA DE CARACTER TECNOLÓGICO Y PERMEABLE.

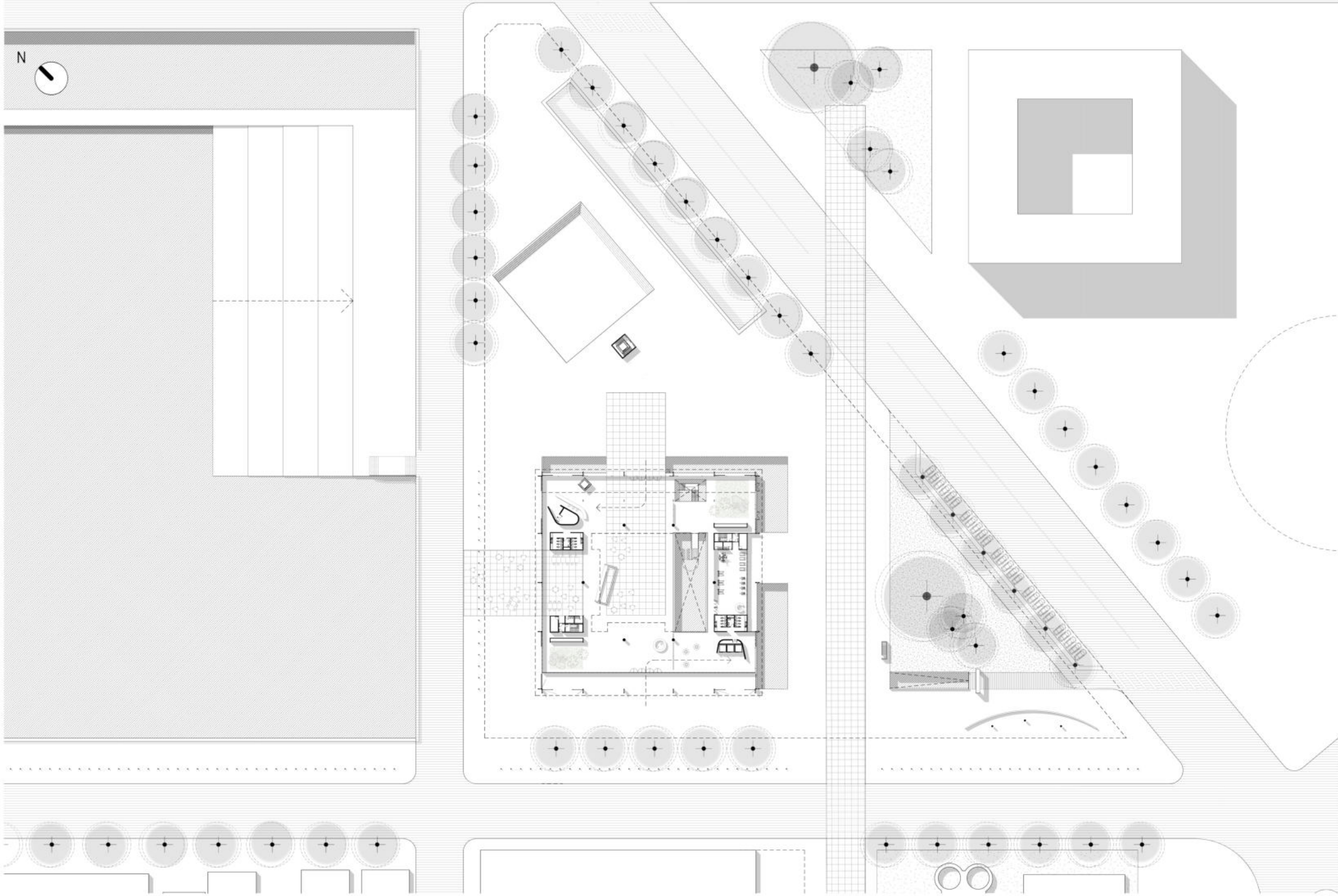


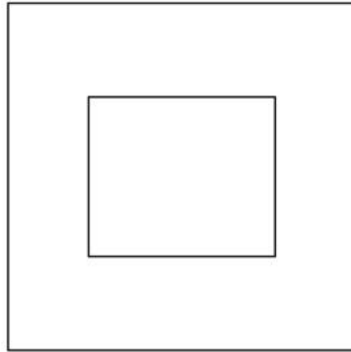


REFERENCIAS

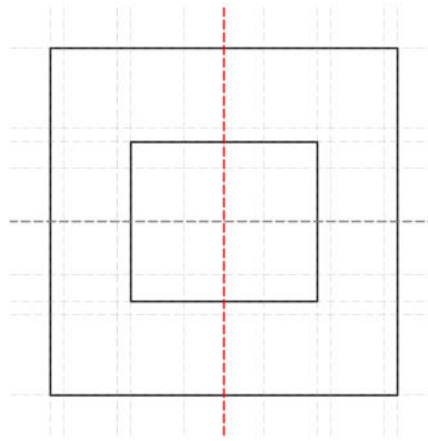
- | | | |
|---------------------------|--------------------------|------------------------------------|
| 1- CC// TEATRO | 4- ACCESO PUERTO NUEVO | 7- VIVIENDA UNIFAMILIAR + COMERCIO |
| 2- VIVIENDA MULTIFAMILIAR | 5- NUEVO EDIFICIO ADUANA | 8- MUSEO DEL PUERTO NUEVO |
| 3- USINA PUERTO NUEVO | 6- PARQUE COSTA SALGUERO | 9- ARENERAS |
| | | 10- MERCADO |



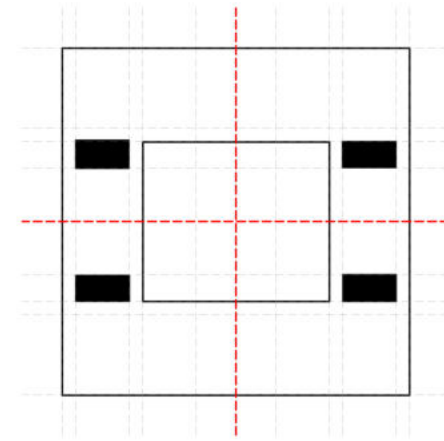




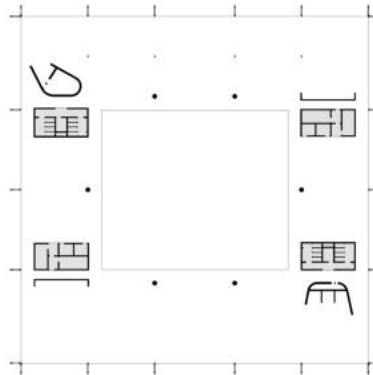
geometria principal



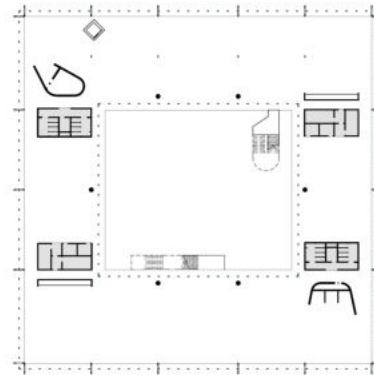
grilla estructural



nucleos servicio



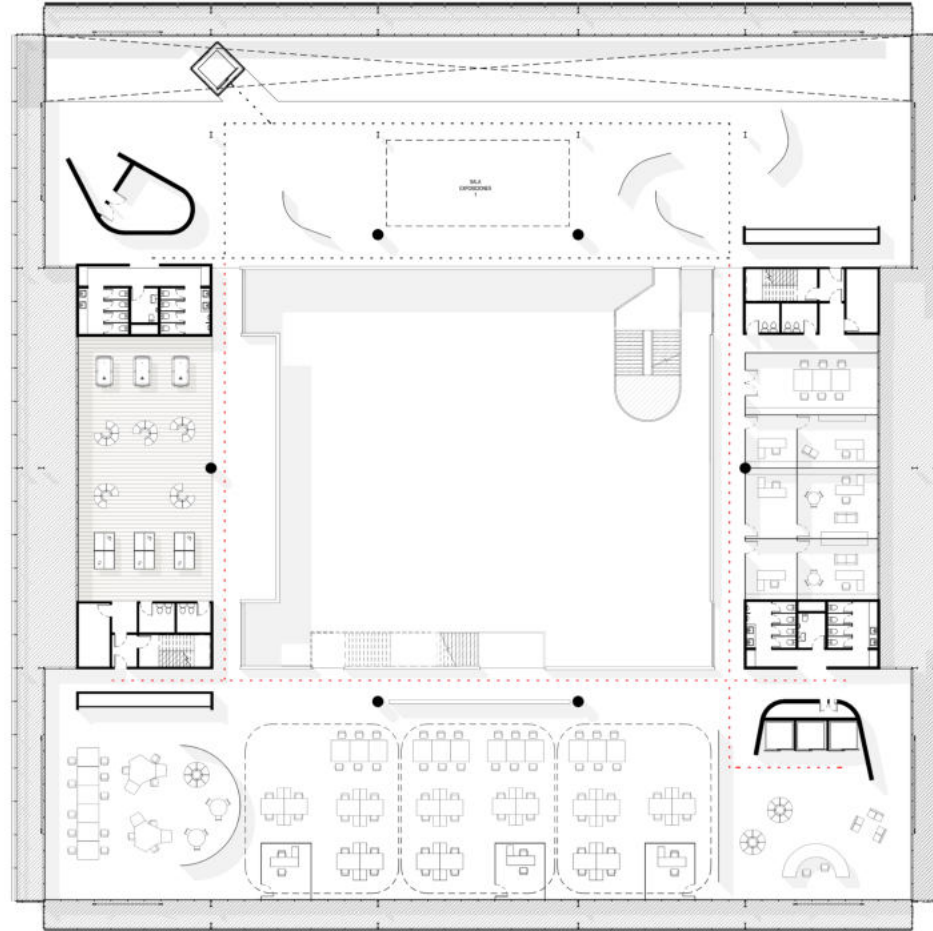
elementos estructurales



circulaciones



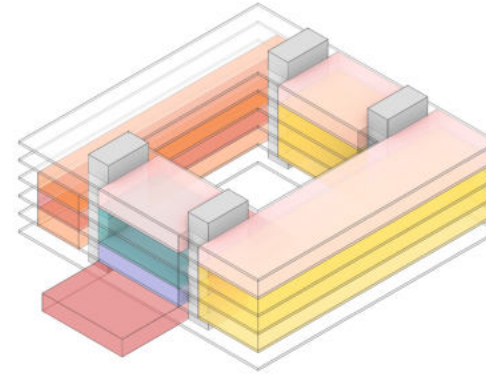
esquema programatico



1P + 4.00

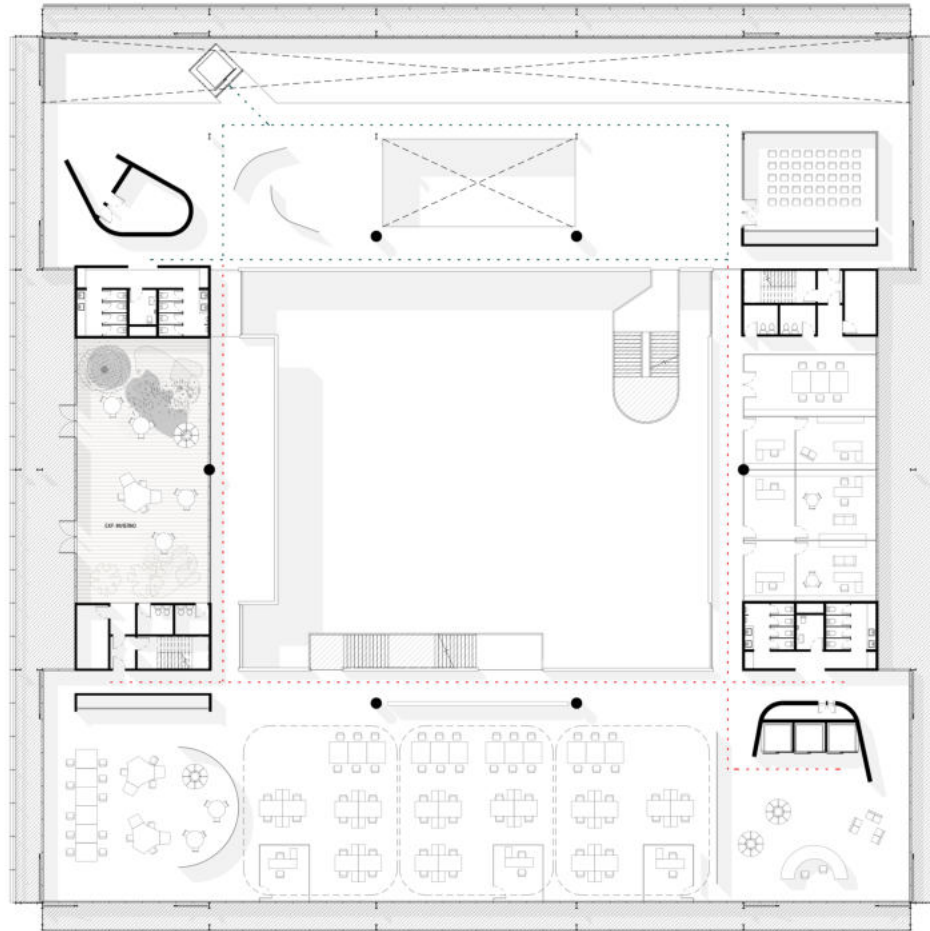


detalle programa

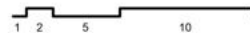


- bar pb
- gerencias afip
- gerencias aduana
- oficinas alquiler
- esparcimiento
- invernadero
- sala expo
- restaurant cultura
- area educativa

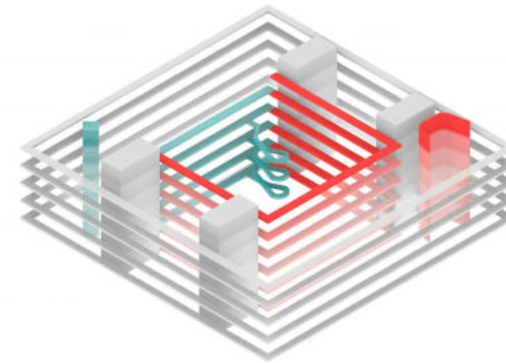




2P + 8.00

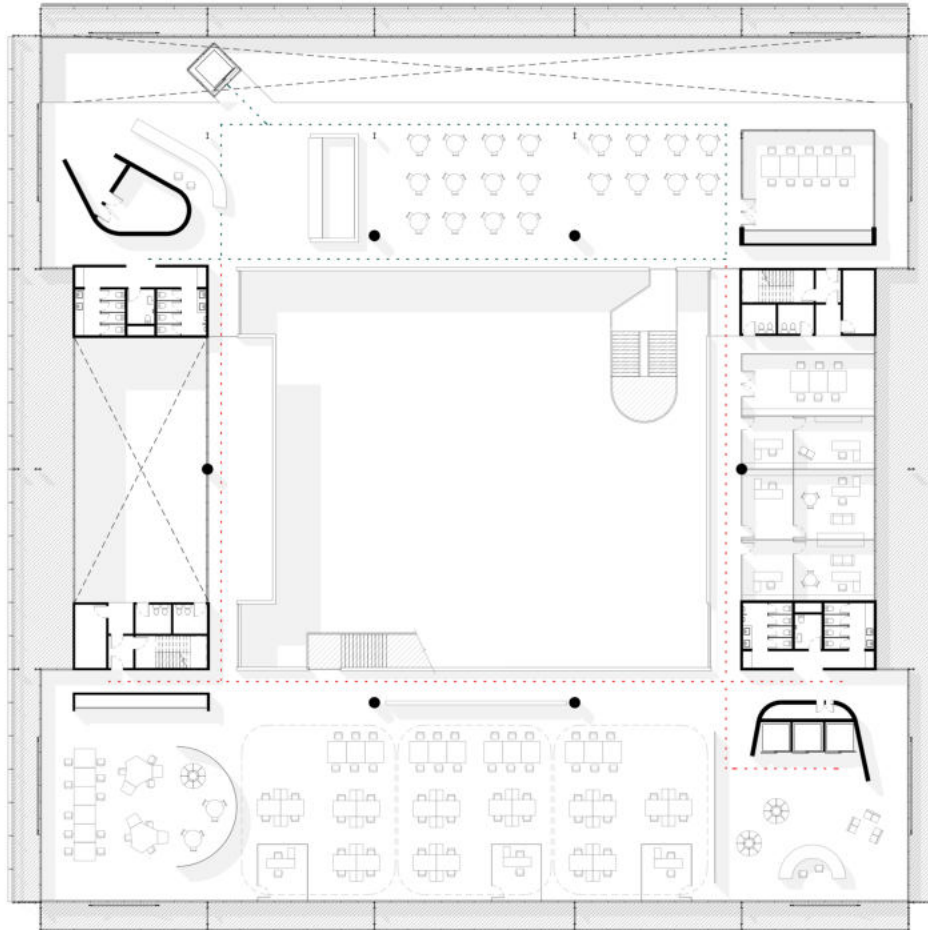


equema circulatorio



empleadxs / privado
visitas culturales/ publico
personal mantenimiento

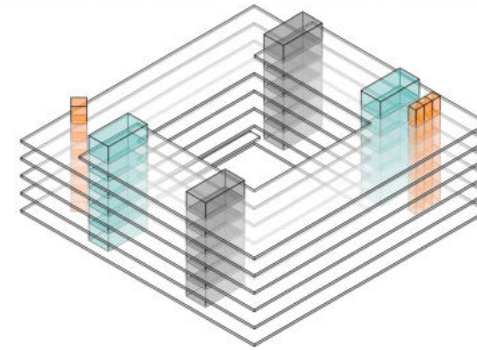




3P + 12.00

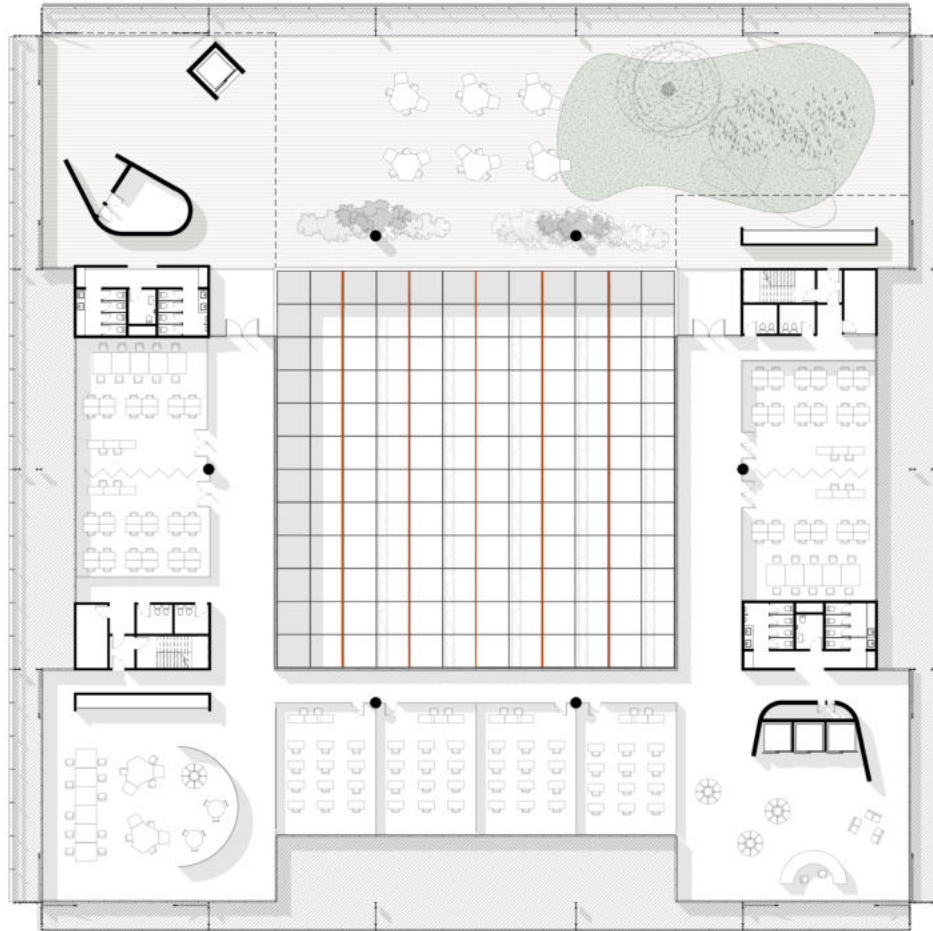


equema nucleos

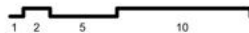


- ascensores
- escalera de servicios
- nucleos sanitarios

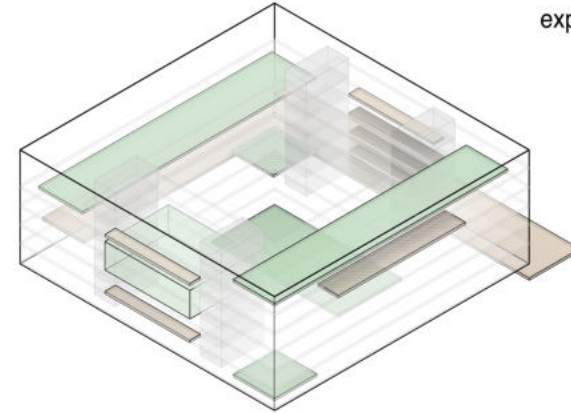




4P + 16.00



axo expansiones



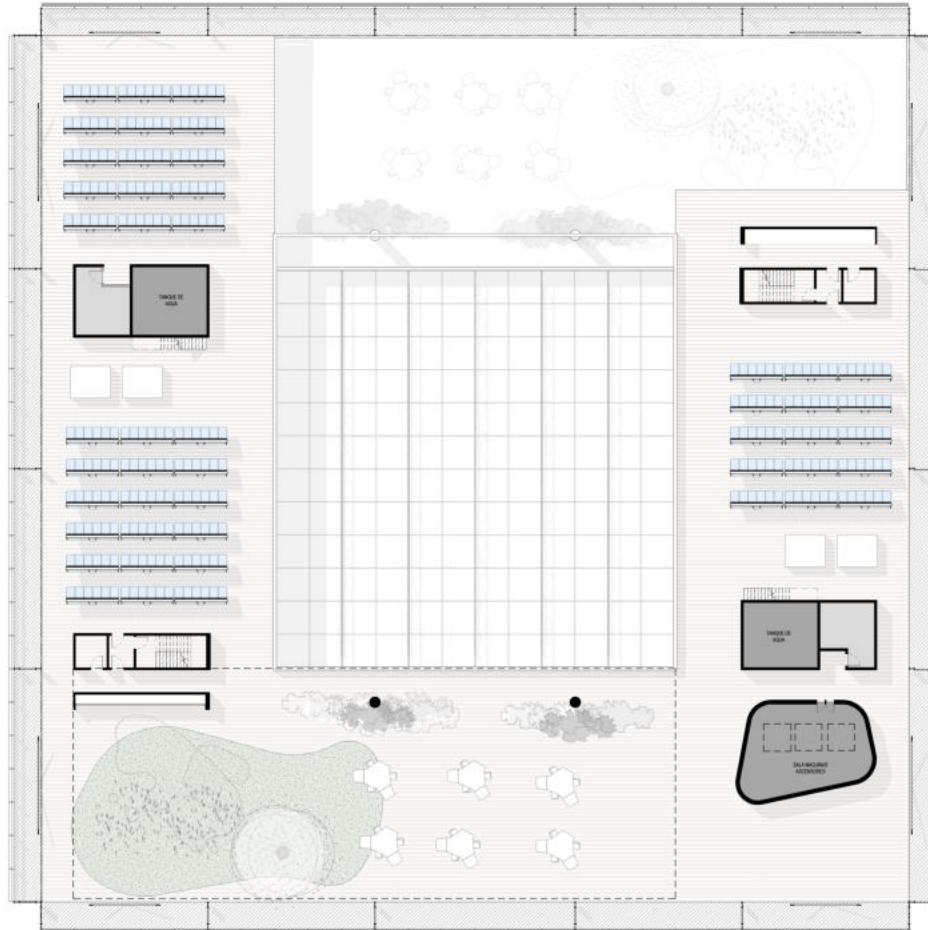
expansiones/ terrazas verdes

expansiones secas

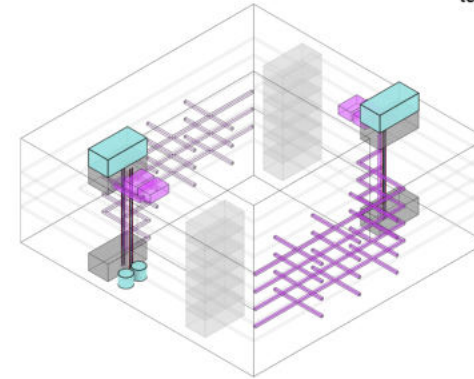




axo instalaciones



AZOTEA + 20.00

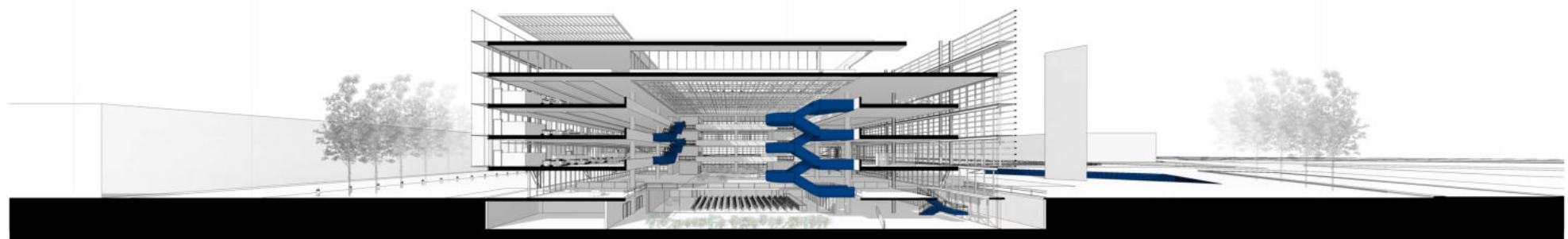
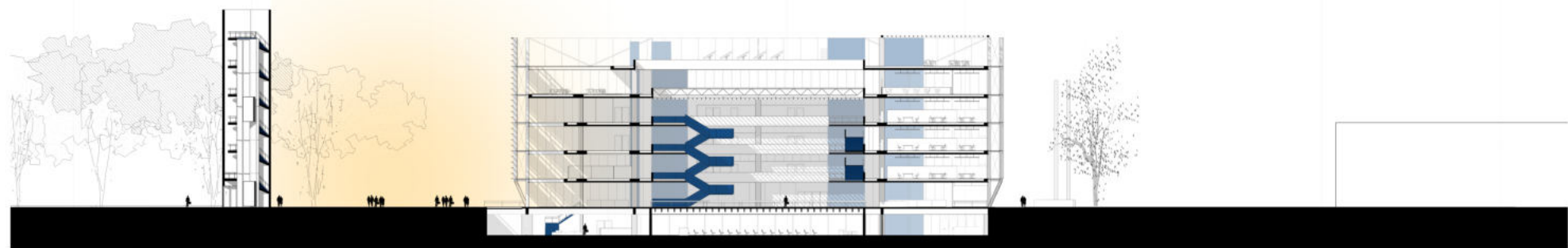
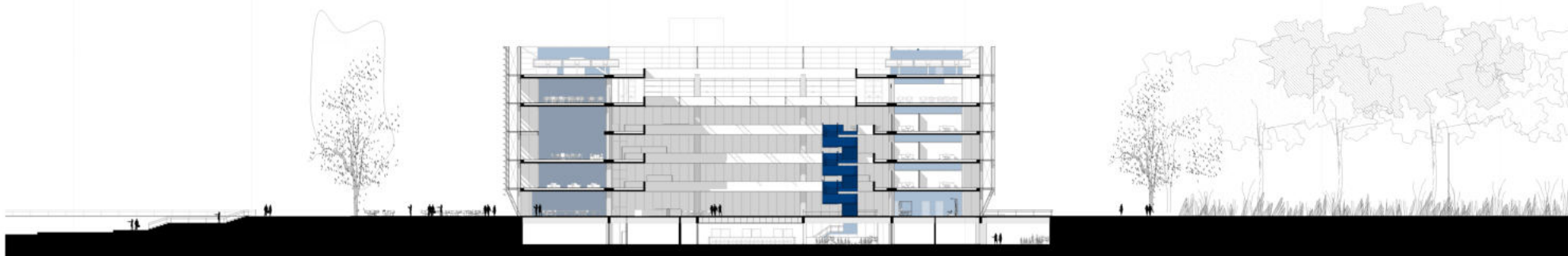


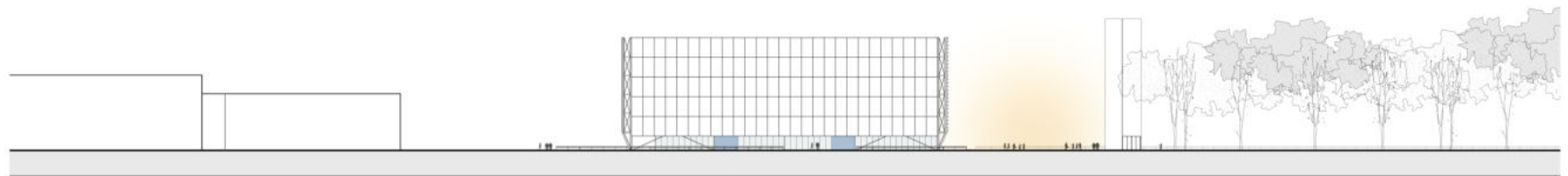
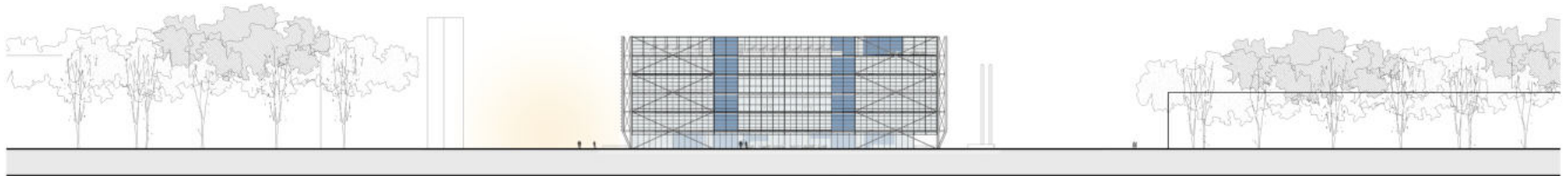
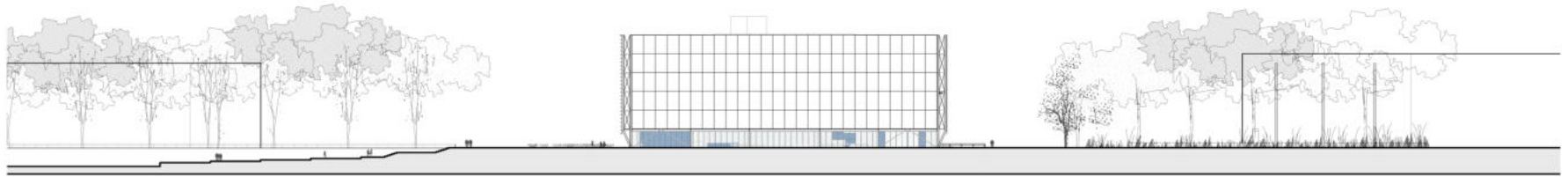
tanque bombeo (ss) + reserva agua

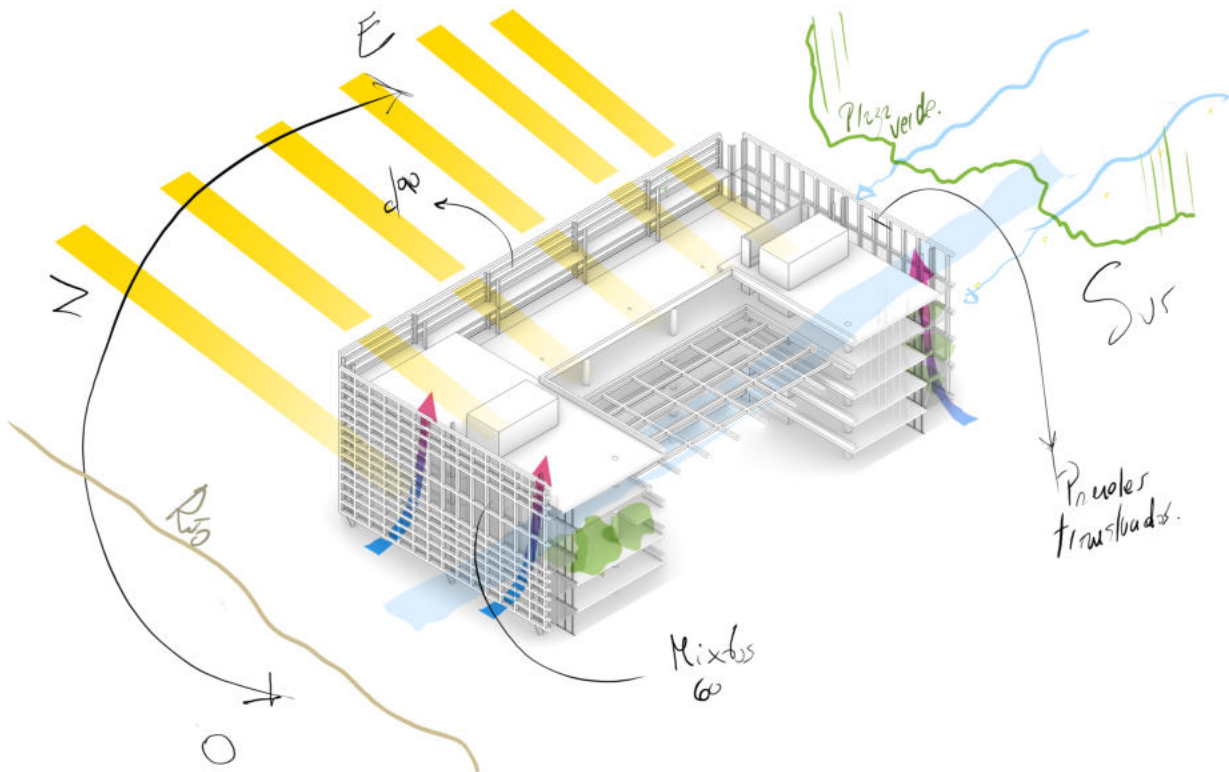
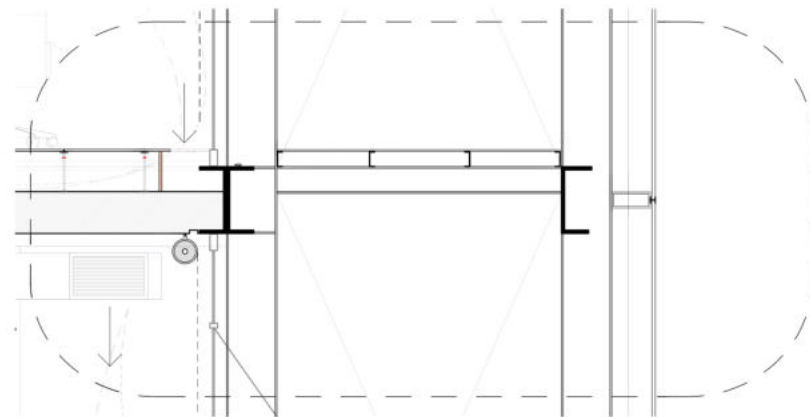
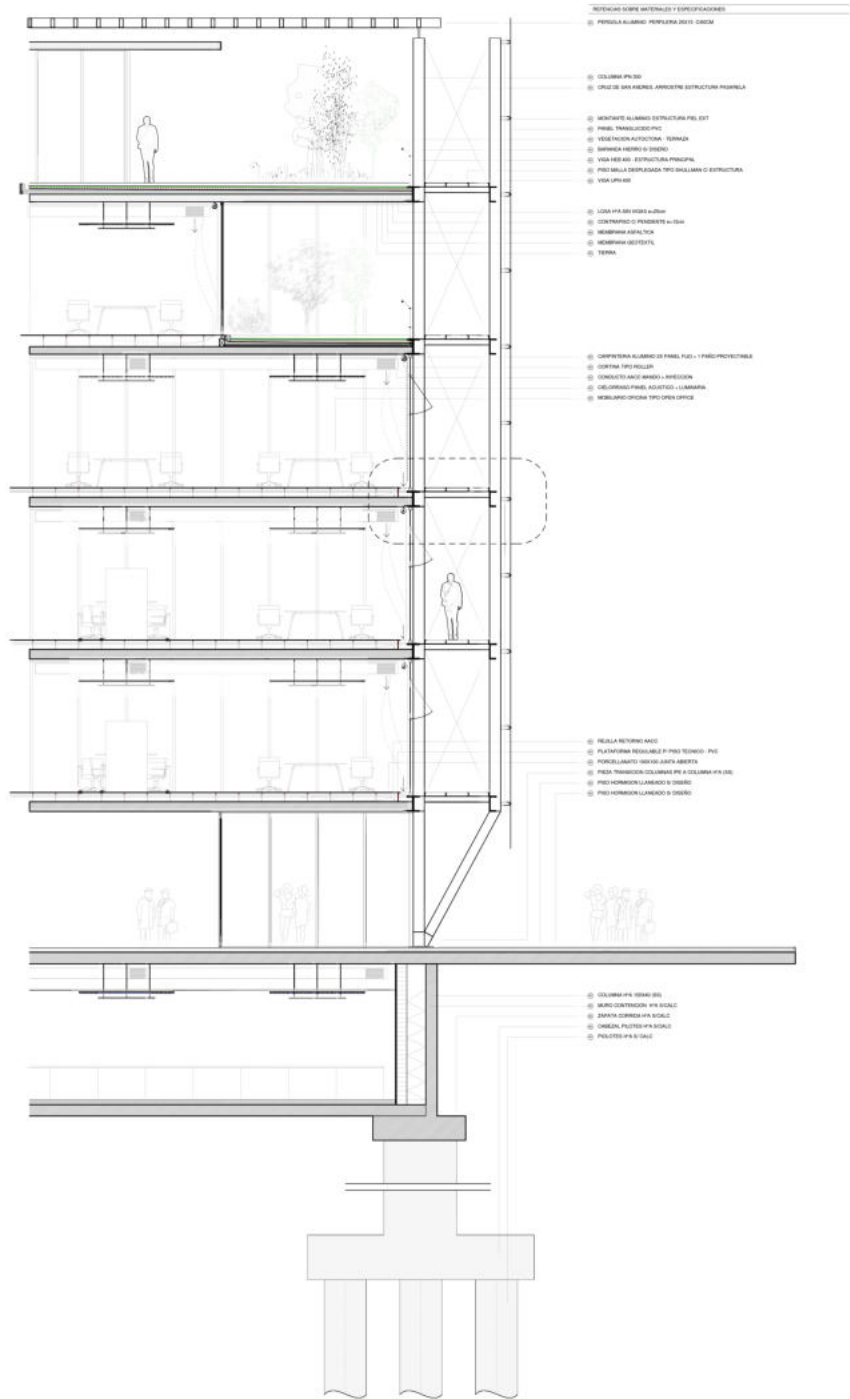
instalacion termomecanica

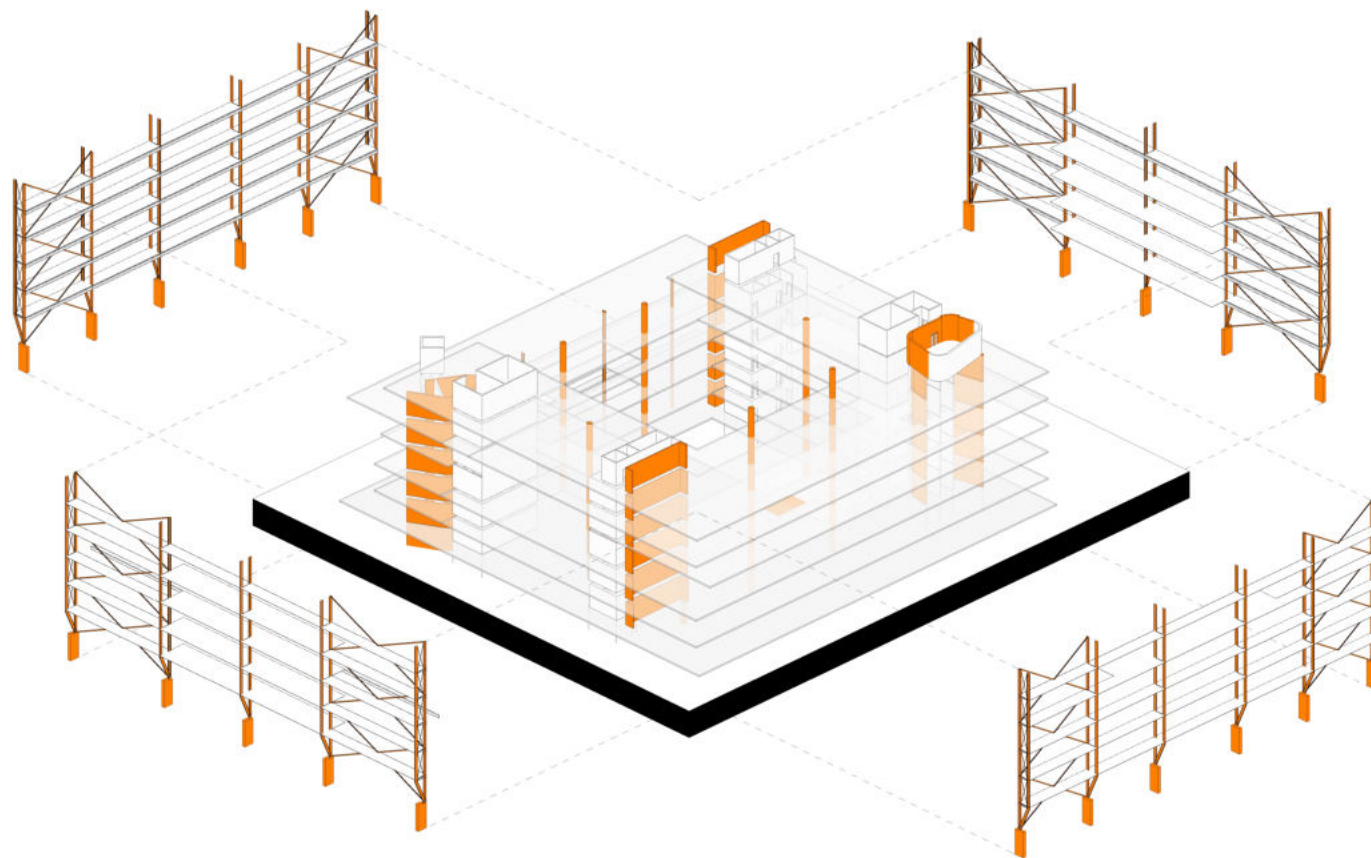
pleno sanitarias

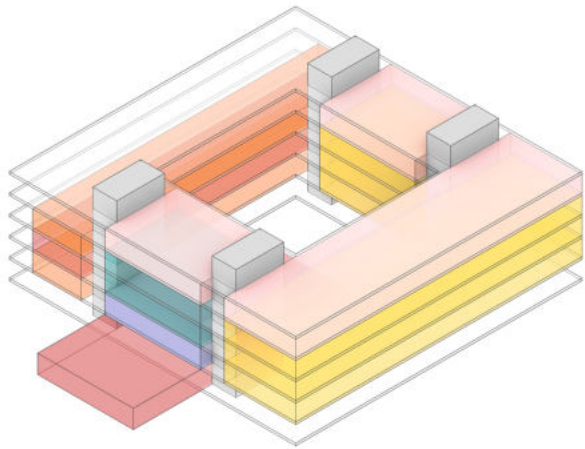




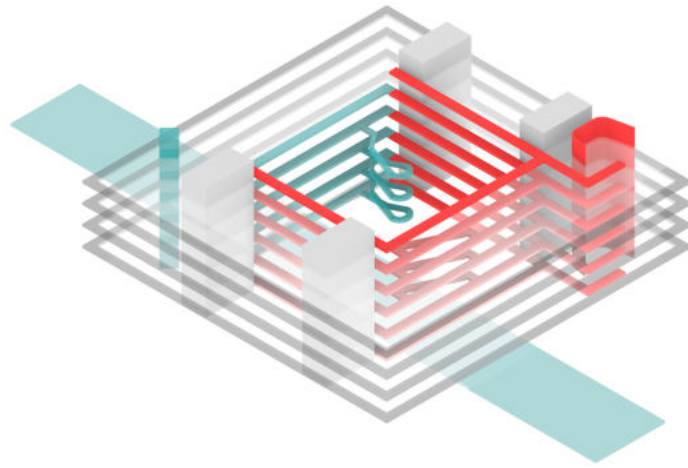




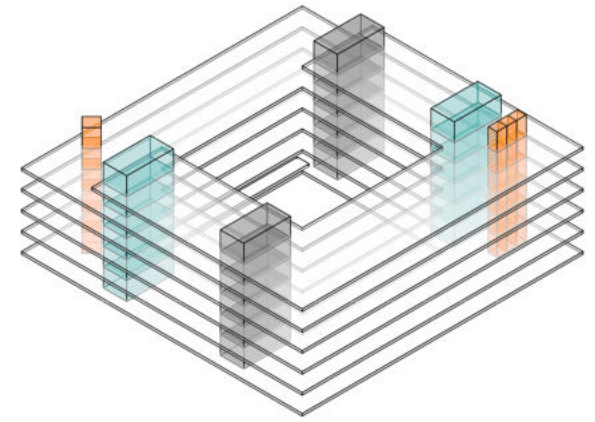




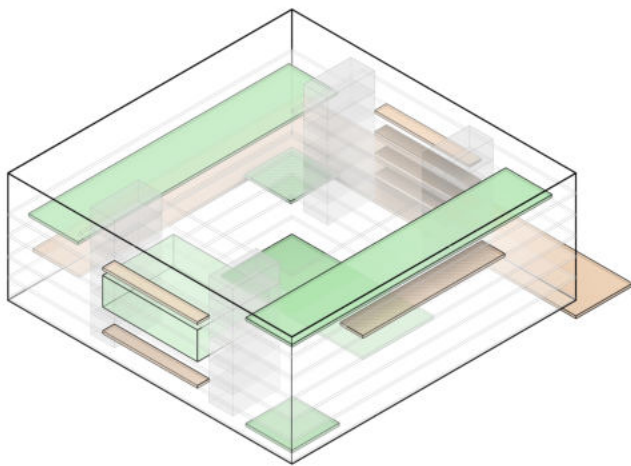
programa



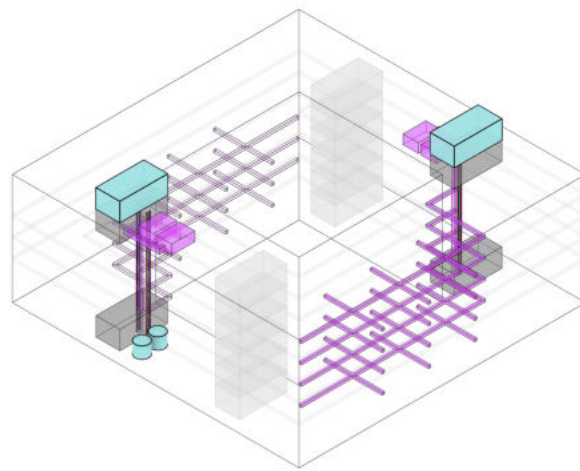
circulaciones



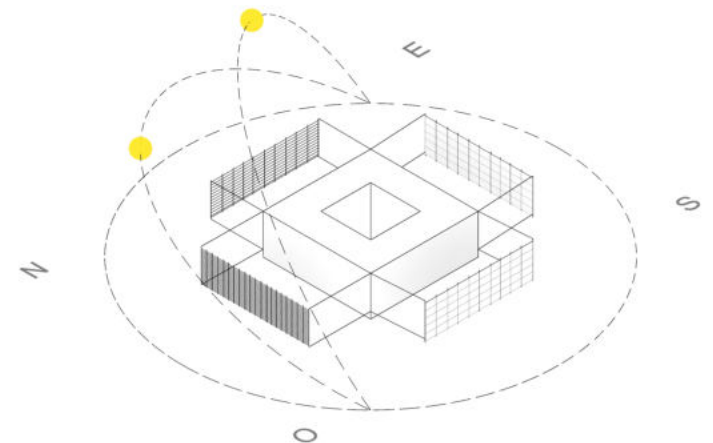
nucleos



expansiones



instalaciones



orientaciones/ fachada

